

August 28, 2017

To: Kindergarten through 12th graders living in the Barataria-Terrebonne Estuary System

Re: Barataria-Terrebonne National Estuary Program's Estuary Artworks Contest

The Barataria-Terrebonne National Estuary Program (BTNEP) would like to invite all students in Kindergarten through 12th grade who live in the Barataria-Terrebonne Estuary System (BTES) to participate in BTNEP's 4th Annual *Estuary Artworks* contest. The contest is being held to celebrate National Estuaries Day on September 23, 2017. Students are invited to submit their artwork for judging by Wednesday, September 20, 2017, at 4pm to the BTNEP office. Winners will be selected and their artwork will be featured in the 2018 Estuary Artworks calendar.

National Estuaries Week will be held September 17-23 to promote the importance of estuaries and the need to protect and restore them by raising awareness of the vital role estuaries play in our society. Activities across the country sponsored by various groups are creating awareness and public interest about the significance of estuaries in the environment. BTNEP's goal with the *Estuary Artworks* contest is to educate children about the BTES, and its importance. As the estuary disappears, so does the culture and heritage of its people.

BTNEP is one of 28 national estuaries in the country. The BTES is located between the Mississippi River and Atchafalaya Rivers in south Louisiana. The estuary includes all or parts of 16 Louisiana parishes. Those parishes include: Ascension, Assumption, Iberia, Iberville, Jefferson, Lafourche, Orleans, Plaquemines, Pointe Coupee, St. Charles, St. James, St. John the Baptist, St. Martin, St. Mary, Terrebonne, and West Baton Rouge.

For more information, please see the attached flyers and entry form or contact Kristy Monier at 985-447-0868 or kristy@btnep.org.

We are looking forward to seeing your artwork!

Sincerely,

Kristy Monier
BTNEP Event Coordinator

BTNEP's

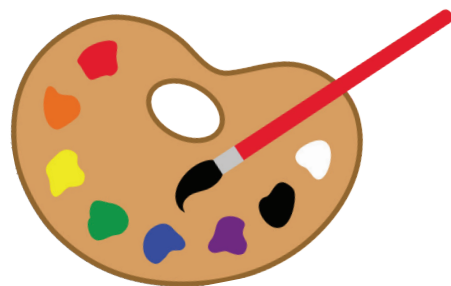
Estuary Artworks

Celebrating National Estuaries Week

2017 Art Contest

YOU ARE INVITED!

The Barataria-Terrebonne National Estuary Program (BTNEP) would like to invite students in grades K-12 to participate in its 4th Annual Estuary Artworks art contest. Students who live within the Barataria-Terrebonne Estuary System (BTES) are invited to paint their favorite estuary scene. Winners will be chosen in each age group. An additional nine winners will be featured in the BTNEP Estuary Artworks calendar.



2017 CONTEST THEME

BTNEP has decided to continue with our theme of *Our Estuary... My Future: Protecting the Colors of the Estuary!* Our estuary is a Louisiana treasure. It is very important to all of us that live within the BTES. It is also important to the rest of the country. Our estuary provides a vast amount of resources to many people. Protecting it is key to the future for the younger generations. The colors in our estuary are represented in so many ways from the plants to the water to different species that live in the estuary. BTNEP would like to see those beautiful colors in our participants' artwork.

HOW TO ENTER:

Mail your artwork to BTNEP at P.O. Box 2663, Thibodaux, LA 70310, Attention: Estuary Artworks, or drop off artwork at the BTNEP office at 320 Audubon Drive, N. Babington Hall, Rm 105, Thibodaux, LA. To qualify, artwork must be received by the BTNEP office by 4pm on Wednesday, Sept. 20, 2017.

ELIGIBILITY

- Any student in grades Kindergarten - 12th is eligible
- Must live in the Barataria-Terrebonne Estuary System (anywhere between the Mississippi and Atchafalaya Rivers in south Louisiana in the parishes of Pointe Coupee, West Baton Rouge, Iberville, Ascension, Assumption, St. James, St. John, St. Mary, Terrebonne, Lafourche, St. Charles, Jefferson, Plaquemines, Iberia, St. Martin, Orleans)
- Entry form must be completed and taped to the back of artwork
- Signature of parent must be on entry form



**ENTRIES MUST BE RECEIVED BY WEDNESDAY, SEPTEMBER 20, 2017.
JUDGING WILL TAKE PLACE ON SEPTEMBER 21.**

CONTEST RULES/JUDGING CRITERIA

- Artwork must represent items in the BTES (See below for examples).
- No computer generated poster or trademark art. All work must be student's original artwork.
- 8.5 x 11 white paper, no loose leaf
- Drawing must be horizontal
- No parental help with drawing
- Crayons, paint, colored pencils, chalk allowed
- Vibrant colors preferred
- Artwork should be packaged so that artwork stays flat
- If guidelines are not followed, artwork will be disqualified



Artwork will be judged with the following criteria: estuary related, originality, creativity, neatness, and artistic execution.



PRIZES

Entries will be divided into four categories; K-2, 3-5, 6-8, and 9-12. First place winners will be chosen in each category and will be awarded a \$25 gift card to their favorite restaurant.

An additional nine entries will be selected and all will be featured in the 2018 Estuary Artworks calendar. All winners will be given copies of the calendar and will receive passes to Audubon Nature Institute to be used at the Audubon Zoo, Audubon Aquarium of the Americas or Audubon Butterfly Garden & Insectarium. Press releases will also be sent to the local newspapers of the those students selected for the calendar.

Suggestions for your artwork

So what is an estuary and why it is important?

An estuary is a coastal area where saltwater from the ocean mixes with fresh water from rivers and bayous. The estuary is very important to Louisiana. It protects the coastline from damage in hurricanes. It provides people with resources such as oil, gas, fisheries, and serves as an inlet for the navigation industry. It is also home to many recreational activities such as fishing, boating, camp life, etc.



So what is in our Estuary?

The estuary is home to many species of animals and plants. You may find different animals such as alligators, birds, frogs, raccoons, turtles and fish. We also get a lot of our seafood such as crabs, crawfish, and shrimp from our estuary. You will also see a lot of trees and native plants such as bald cypress, live oak, Southern Magnolia, Louisiana Blue Flag Iris, and Cardinal Flower. Our estuary also serves as the nesting place for different types of birds, such as; Red Knot, Piping Plover, and Prothonotary Warblers.



BTNEP's

Estuary Artworks

Celebrating National Estuaries Week

2017 Estuary Awareness Art Contest

THEME:

Our Estuary...My Future: Protecting the colors of the estuary!

Artwork Entry Deadline – September 20, 2017 by 4PM

This form **MUST** be filled out completely and taped to the back of the artwork in order to be eligible for the contest. No other forms will be accepted. *Please print all information below.*

Please circle the appropriate grade level:	K-2	3-5	6-8	9-12
--	-----	-----	-----	------

Student's First and Last Name: _____

Address: _____

City: _____ Zip Code: _____

Grade: _____ Age: _____ Parent or Guardian Name: _____

Parent's Phone (____) _____ Parent's Email: _____

School: _____

School Address: _____

City: _____ Zip Code: _____

Phone: (____) _____ E-mail: _____

REQUIRED: Signature of parent or guardian certifies that the information provided is accurate and allows BTNEP to utilize the artwork or parts of the artwork in the public domain for all educational or promotional purposes. This also allows first name, last name initial, age and parish to be published with pictures.

Parent signature: _____

Please provide the name of your local newspaper: _____

Category winners will receive a gift card to their favorite restaurant. Please list two of your child's favorite restaurants: _____

For questions or more information, contact Kristy Monier, BTNEP Media/Public Relations Coordinator at 985-447-0868 or kristy@btnep.org.

